

CORENEWS

FEB
2016

GEORGIA
core CENTER for ONCOLOGY
RESEARCH & EDUCATION

UPCOMING EVENTS

MARK YOUR CALENDARS!

Piedmont Hospital's Clinical Co-Management of the Oncology Patient

Georgia Tech Hotel and
Conference Center
Saturday, February 27, 2016
Atlanta, Georgia

Winship Cancer Institute 2016 Melanoma Conference

Emory Conference Center Hotel
Saturday, February 27, 2016
Atlanta, Georgia

Valdosta's Night for Hope: Fundraising Gala

Valdosta State University
Saturday, March 5, 2016
Student Union Ballroom
Valdosta, Georgia

8th Annual Winship Cancer Institute Oncology Nursing Symposium

Evergreen Marriott Conference
Center
Friday, March 11, 2016
Stone Mountain, Georgia

2016 GASCO Administrators' Association Meeting

Omni Hotels and Resorts
Friday, March 11, 2016
Atlanta, Georgia

Neuroendocrine Tumor Regional Conference "Multidisciplinary Management of NET Cancers"

Atlanta Buckhead Marriott
Hotel

Gwinnett Medical Center Featured in Oncology Issues

In early 2013, members of the **Gwinnett Medical Center Breast Program Leadership Team** voiced a need to reorganize and realign the care continuum for patients undergoing breast biopsies. The team saw an opportunity to create a more comprehensive diagnostic care pathway to include more timely results to breast biopsy patients, streamlined access to treatment specialists and improved processes and communication with referring physicians. Read more about their vision in the original article of the November/December Oncology Issues [here](#).

Governor Deal Announces Investment of \$70 Million in Mercer and Morehouse Universities' Schools of Medicine

Governor Nathan Deal announced that the state is going to put \$70 million it will receive as part of a settlement agreement with the federal government over disputed Medicaid payments into the **Morehouse** and **Mercer University Schools of Medicine**. Read more [here](#).

New Program Aims to Produce More Doctors for Georgia



The **University System of Georgia** is stepping up its efforts to increase graduate medical education programs at hospitals to address an impending physician shortage that could cripple the state's health-care system. USG is looking to increase the number of residents enrolled in the state's graduate medical education (GME) programs by about 400 by 2022. Currently the state has about 2,100 residents. To learn more, click [here](#).

Emory Winship Cancer Institute Appoints Two New Leaders and Finds a Partner in Thomasville

Suresh S. Ramalingam, MD, an internationally recognized lung cancer physician-investigator, has been named Deputy Director of Winship Cancer Institute of Emory University. He will also serve as Assistant Dean for cancer research in the Emory School of Medicine. Read more [here](#).

Saturday, March 19, 2016
Atlanta, Georgia

**Camp Sunshine's "The Lion,
The Witch, and the
Wardrobe"**

Alliance Theatre
Sunday, March 20, 2016
Atlanta, Georgia

CORE Bits---
Access to Care

Are you a college sports fan?
Watch for advertising for
GeorgiaCancerInfo.org on
www.georgiadogs.com and
www.ramblinwreck.com.

**Do you know your
patients' most common
unmet needs?**



CANCER SURVIVORSHIP CONNECTION
An Initiative of Georgia CORE

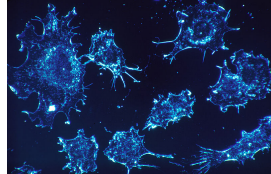
Georgia CORE is a public-private partnership designed to bring higher quality, better organized and more cost-effective care to cancer patients and survivors. The organization's Board of Directors is composed of cancer experts from leading cancer centers and academic institutions. CORE's network develops innovative tools and resources for cancer patients, survivors, caregivers, healthcare providers and researchers. Our collective vision is to contribute to the state's distinction as a national leader in cancer care and research and to better health for all Georgians. CORE's flagship resource, www.GeorgiaCancerInfo.org is the only statewide online information center of its kind, where details can be found on oncologists, clinical trials and treatment centers throughout the state.



Sagar Lonial, MD, an internationally renowned expert in the biology and treatment of patients with multiple myeloma, has been named Chair of the Department of Hematology and Medical Oncology within Emory University School of Medicine and the Winship Cancer Institute. Read more [here](#).

In addition, Winship has announced the first community hospital partner for its new cancer network: **Archbold Memorial Hospital** in Thomasville. Read more [here](#).

Exercise After Cancer: New Study in the Works



An oncologist and an exercise physiologist walk into a cocktail party . . .

And when they walk out, they have a novel idea for an experiment to find out how exercise can help women recover from breast cancer chemotherapy.

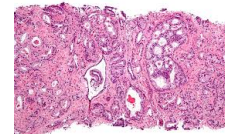
Read more [here](#).

Exchange Enrollment Shows Strong Atlanta Area Numbers

Georgia's exchange sign-ups have nearly equaled last year's open enrollment total. Federal health officials reported that as of the 16th of January, 535,918 Georgians have signed up for health insurance through the exchange or were automatically renewed for coverage in 2016. Read more [here](#).

To Test or Not to Test: The PSA and You

For men seeking clarity on whether to undergo routine prostate cancer screening, two recent studies in the Journal of the American Medical Association may raise new questions. Read more [here](#).



Insurer's Approval of Genetic Testing for Some Cancers Raises Questions



Pennsylvania-based Independence Blue Cross' announcement that it will cover a complex type of genetic testing for some cancer patients thrusts the insurer into an ongoing debate about how to handle an increasing array of these expensive tests. Read more [here](#).

Got News?

We'd love to share it! Send events, announcements and stories relevant for CORE News to efullerton@georgiacore.org.

Georgia CORE, 50 Hurt Plaza, Suite 704, Atlanta, GA 30303

[SafeUnsubscribe™ {recipient's email}](#)

[Forward this email](#) | [Update Profile](#) | [About our service provider](#)

Sent by efullerton@georgiacore.org in collaboration with



Try it free today